

Wafer Double Door Check Valve

FIG. 5306

Specifications

- Valve Comply with BS EN 12334
- The short face to face dimension and compact design of this valve allow installation and service in tight spaces.
- Spring assisted for better dynamic behavior.
- Soft sealed for perfect tightness even at low differential pressure.
- Flanged to EN1092-2 PN10 or PN16, ANSI B16.1 Class125.
(Other types available on request)
- WRAS Approved: EPDM Seated for Potable Water.
- ANSI / NSF 61 & 372 Certificated for DN50-DN1200.
For larger than DN600 product data, contact the supplier.
- Rated Working Pressure 25 bar, 300 psi.

Corrosion Protection

- Internally and Externally Liquid Epoxy Painted or Fusion Bonded Epoxy Powder Coated (FBE).

Material Specification

Part	Material	EN Specification	ASTM Specification
Body	Gray Cast Iron	EN 1561 EN-GJL-250	A126 Class B
Disc	Stainless Steel	EN 10088 X5CrNi18-10	A351 Grade CF8
Seat	Rubber	EN 681 EPDM or NBR	D2000
Hinge Pin	Stainless Steel	EN 10088 X5CrNi18-10	A276 Type 304
Stop Pin	Stainless Steel	EN 10088 X5CrNi18-10	A276 Type 304
Pin Retainer	Stainless Steel	EN 10088 X5CrNi18-10	A276 Type 304
Spring	Stainless Steel	EN 10088 X10CrNi18-8	A276 Type 302
Washer	PTFE	Commercial	Commercial
Gasket	Rubber	EN 681 EPDM or NBR	Commercial

- Ductile Iron Body Available.
- Valve Bodies of 25 bar / 300 psi, DN350 and larger sizes are Ductile Iron.
- Other material types are available upon request.

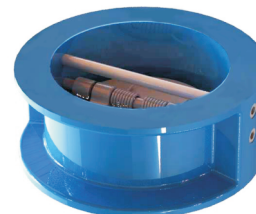
Main Dimensions (mm)

Size	A				B	N-R
	Table D / E Flange	ANSI 125# / 150# Flange	EN1092-2 PN16 Flange	EN1092-2 PN25 Flange		
DN40	84	82	89	89	43	—
DN50	96	102	106	106	54	—
DN65	109	121	126	126	54	—
DN80	126	134	141	141	57	—
DN100	158	172	161	165	64	—
DN125	190	194	191	190	70	—
DN150	210	220	217	220	76	—
DN200	267	277	272	280	95	12-R12.5
DN250	331	337	327	337	108	12-R15
DN300	379	407	382	397	143	12-R15
DN350	445	447	442	454	184	16-R15
DN400	493	511	494	513	191	16-R16.5
DN450	559	546	554	563	203	—
DN500	616	602	616	623	213	—
DN600	723	715	733	729	222	—

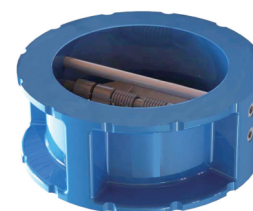
Notes

- Designs, materials and specifications shown are subject to change without notice due to the continuous development of our products.

Schematic



Size DN50 - DN150
Size DN450 - DN600



Size DN200 - DN400

