

Automatic Air Vent Valve

FIG. 9701

Specifications

- Small orifice of 1/16 inch (1.6mm) to release air under pressure during normal pipeline operation.
- The float is connected to the vent via a linkage mechanism which is capable of operating the vent under full pipeline pressure.
- NPT or Metric thread of inlet.
- The maximum air discharge pressure is 2.5 bar.
- Maximum Working Pressure is 16 bar.
- Certificated to ANSI / NSF 61 & 372.

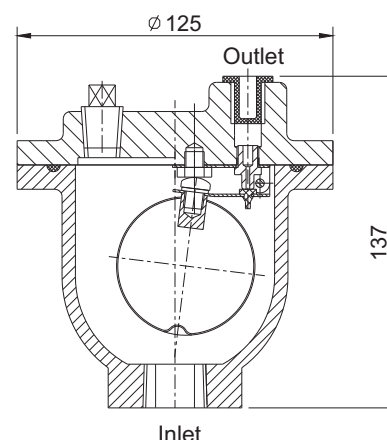
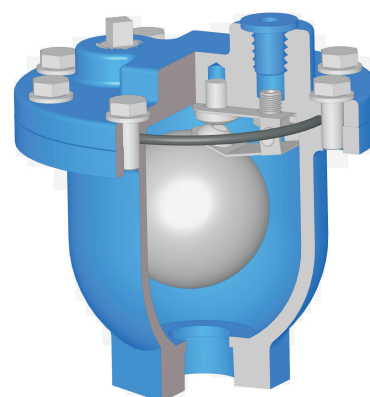
Corrosion Protection

- Fusion Bonded Coating or Liquid Epoxy Painted Interior and Exterior.

Main Dimensions(mm)

Size	Inlet Size	Outlet Size
1/2"	1/2" BSPT or NPT	1/2" BSPT or NPT
3/4"	3/4" BSPT or NPT	1/2" BSPT or NPT
1"	1" BSPT or NPT	1/2" BSPT or NPT

Schematic



Material Specifications

Part	Material	EN Specification	ASTM Specification
Body	Gray Cast Iron	EN 1561 EN-GJL-250	A126 Class B
Cover	Gray Cast Iron	EN 1561 EN-GJL-250	A126 Class B
Lever Frame	Stainless Steel	EN 10088 X5CrNi18-10	A276 Type 304
Seat	Stainless Steel	EN 10088 X5CrNi18-10	A276 Type 304
Float Ball	Stainless Steel	EN 10088 X5CrNi18-10	A276 Type 304
Gasket	EPDM	EN 681 EPDM	D2000 EPDM
Cover Bolt	Carbon Steel	Grade 8.8	A 307 Grade B
Float Arm	Stainless Steel	EN 10088 X5CrNi18-10	A276 Type 304
Orifice Button	Plastic		
Pivot Pin	Stainless Steel	EN 10088 X5CrNi18-10	A276 Type 304
Pin Retainer	Stainless Steel	EN 10088 X5CrNi18-10	A276 Type 304
Plug	Brass	EN 12165 CuZn39Pb1	B124 C37700
Locator	Stainless Steel	EN 10088 X5CrNi18-10	A276 Type 304

- Other material types are available upon request.

Notes

- Designs, materials and specifications shown are subject to change without notice due to the continuous development of our products.