

Universal Manifold Check Assembly

FIG. F6013

Descriptions

• The Universal Manifold Check Assembly are compact, fully-assembled risers designed for wet pipe fire sprinkler systems in accordance with NFPA requirements. In case of fire, the flow switch creates a signal due to the flow of water in the pipe. It sends this signal to a control board or an electric bell to indicate the floor, zone, or branch of the building that is on fire. The sprinkler system can be instantly tested and drained via the orifice of its test and drain valves.

Features

The Universal Manifold Check Assembly consists of a flow switch, a three-way gauge valve, a pressure gauge, a check valve, and a convenient test & drain valve with adjustable relief valve. Can be mounted horizontally or vertically.

Universal Manifold Check Assembly

- Maximum Service Pressure: 300psi
- Operating Temperature Range: 0°C-49°C
- Pipe Diameter: 50, 65, 80, 100, 150, 200mm (2", 2.5", 3", 4", 6", 8")
- End Connections: Grooved Ends

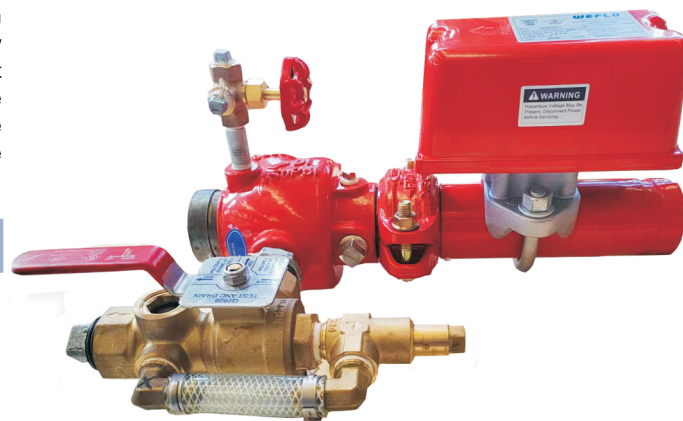
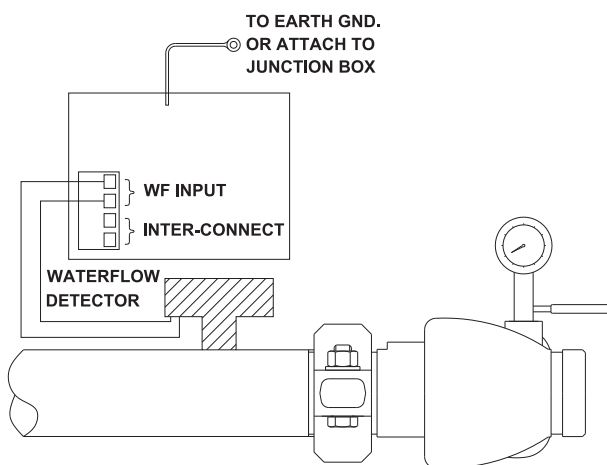
Flow Detector

- Contact Rating: 8A at 125/250VAC; 3A at 24VDC
- Flow Sensitivity Range for Signal: 15-37.8L/min (4-10GPM)
- Conduit entrances: ϕ 22.2mm
- Operating Temperature Range: 0°C-49°C

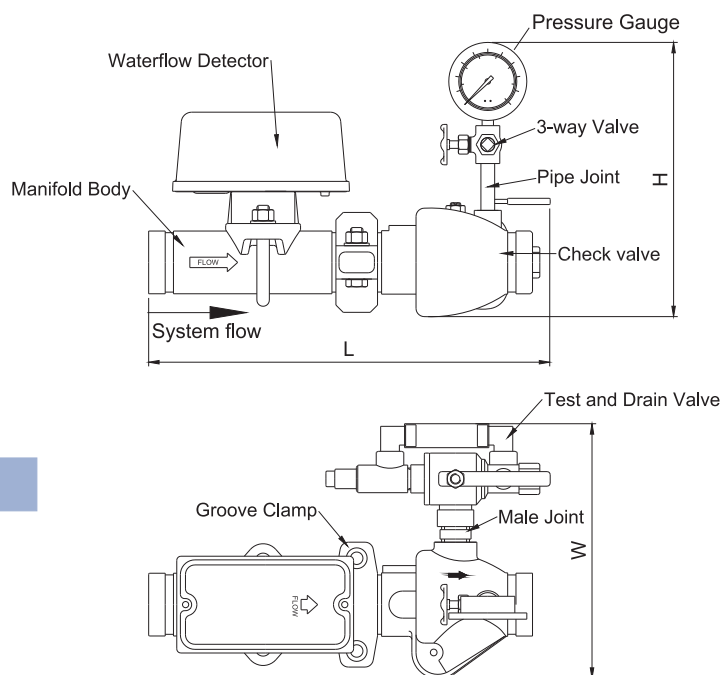
Material

- Manifold Body: Carbon Steel
- 3-way Valve: Brass
- Pipe Joint: Carbon Steel
- Groove Clamp: Ductile Iron
- Male Joint: Malleable Iron
- Test and Drain Valve: Brass

Wiring



Outline Dimensions



Size	L	H	W
2"/DN50	15.4/390	10.4/265	9.7/245
2.5"/DN65	15.5/395	10.8/275	10.6/270
3"/DN80	16.0/405	11.4/290	11.2/285
4"/DN100	16.5/420	12.6/320	12.8/325
6"/DN150	18.5/470	15.0/380	15.0/380
8"/DN200	20.7/525	16.7/425	17.2/440

Note

• Designs, materials and specifications shown are subject to change without notice due to the continuous development of our products.