

Stainless Steel Fire Booster Valve -Dual Booster

FIG. 2419

Specifications

- Meet the requirements of AS2419.3 Standard.
- Forged or hot-pressed for storz connections.
- The Inlet fit a spring-operated non-return valve, and a DN 65 hose connections that comply with local fire brigade requirements.
- Comes with Oil Filled Pressure Gauge, Drain Valve, Dust Cap & Chain.
- High Strength and Long Service Life.

Working Pressure and Test Pressure

- 1400KPa
- 2100KPa

Corrosion Protection

- Spray painted interior and exterior signal red .

Material Specifications

Part	Material	ASTM Specification
Body	Stainless Steel	Grade 304
Seating Disc	Stainless Steel	Grade 304
Disc Facing	NBR	
Disc Plate	Stainless Steel	Grade 304
Inlet Connection	Stainless Steel	Grade 304
O-ring	NBR	
Spring	Stainless Steel	Grade 304
Steam	Stainless Steel	Grade 304
Storz	Aluminium	NEN 3374
Storz Cap	Plastic	
Storz Cap chain	Stainless Steel	Grade 304

Schematic

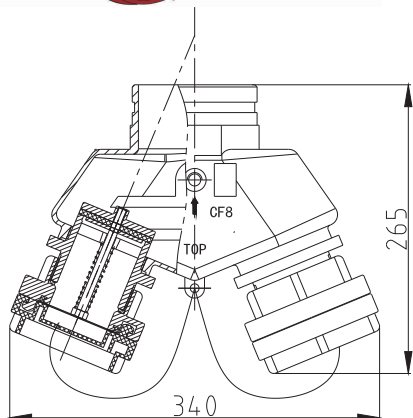
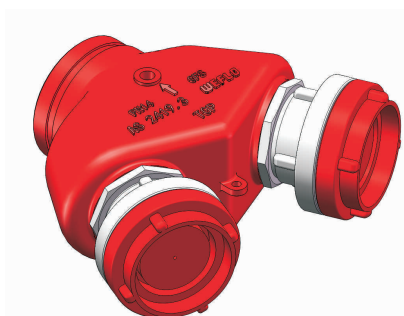


FIG. 2419A(BV-BACKYSTZ)

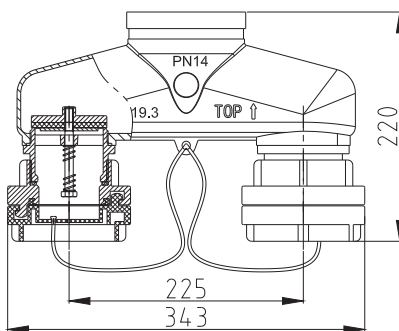
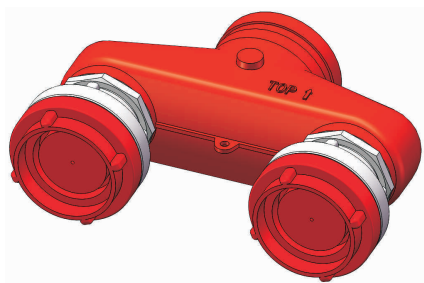


FIG. 2419B(BV-BACKSTZ)

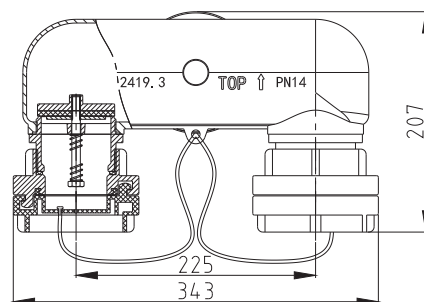
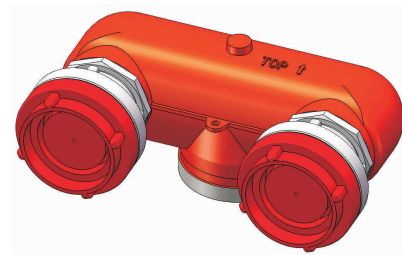


FIG. 2419C(BV-BOTTOMSTZ)