

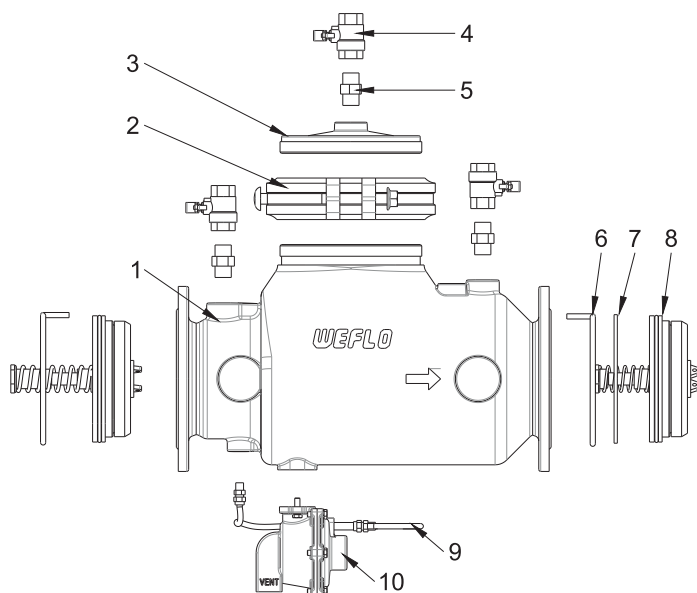
## BACKFLOW PREVENTERS - REDUCED PRESSURE ZONE DEVICE

FIG. F5400

### PRODUCT FEATURES

- A reduced pressure zone device is a testable device designed for use in 'high hazard' conditions to prevent backflow caused by back-siphonage or backpressure. It is intended for use under continuous pressure conditions.
- Multiple Ends Types: Flange by Flange, Flange by Groove, Groove by Groove.
- Pressure Rating: 175psi / 12bar
- Working Temperature: Cold Water, not exceeding 60° C.
- Horizontal only.
- UL/ULC Listed in size 3", 4", 6", 8".

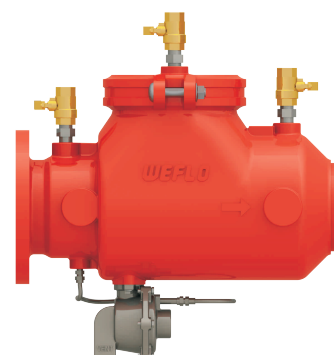
### MATERIAL SPECIFICATIONS



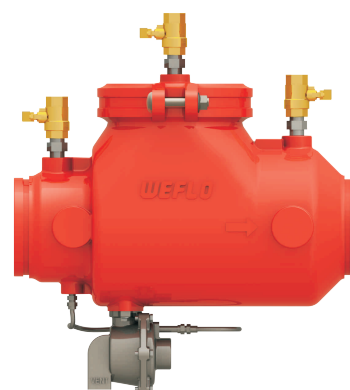
No.	Part	Material
1	Body	Ductile Iron
2	Grooved Coupling	Malleable Iron
3	Cover	Ductile Iron
4	Ball Valve	Brass
5	Nipple	Stainless Steel 316
6	Retaining Ring	Stainless Steel 304
7	Washer	Stainless Steel 304
8	DC Disc Assembly	Nylon+Stainless Steel
9	Tube	Stainless Steel
10	Relief Valve Assembly	Stainless Steel 304
11	RP Disc Assembly	Nylon+Stainless Steel



FLxFL Ends



FLxGR Ends



GRxGR Ends

#### Notes

- Designs, materials and specifications shown are subject to change without notice due to the continuous development of our products.