

BACKFLOW PREVENTER - DOUBLE CHECK VALVE

FIG. F5410

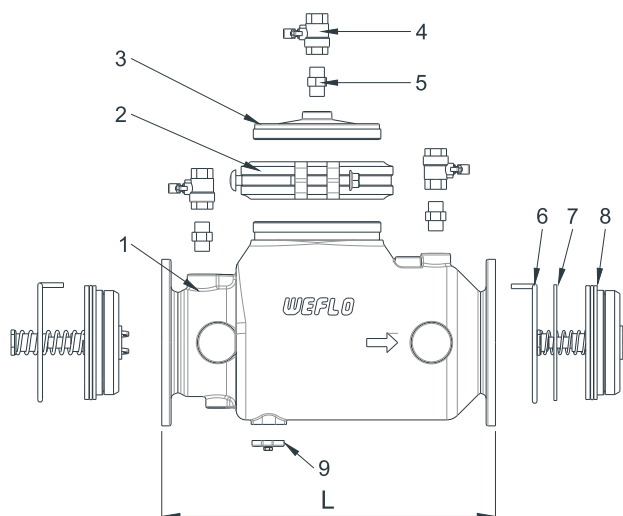
PRODUCT FEATURES

- A double check valve is a testable device designed for use in 'medium hazard' conditions to prevent backflow caused by back-siphonage or back-pressure. It is intended for use under continuous pressure conditions. The DCV have two check modules.
- Multiple Ends Types: Flange by Flange, Flange by Groove, Groove by Groove.
- Pressure Rating: 175psi / 12bar
- Working Temperature: Cold Water, not exceeding 60° C.
- Horizontal only.
- UL/ULC Listed.

MATERIAL SPECIFICATIONS



FLxFL Ends



FLxGR Ends

No.	Part	Material
1	Body	Ductile Iron
2	Grooved Coupling	Malleable Iron
3	Cover	Ductile Iron
4	Ball Valve	Brass
5	Nipple	Stainless Steel 316
6	Retaining Ring	Stainless Steel 304
7	Washer	Stainless Steel 304
8	DC Disc Assembly	Nylon+Stainless Steel
9	Plate	Ductile Iron

GRxGR Ends

Main Dimensions (mm/inch)

Size	3"	4"	6"	8"
L-FL x FL	508/20	508/20	616/24.3	895/35.2
L-FL x GR	489/19.3	489/19.3	597/23.5	874/34.4
L-GR x GR	470/18.5	470/18.5	578/22.8	850/33.5

Notes

- Designs, materials and specifications shown are subject to change without notice due to the continuous development of our products.