

Grooved Butterfly Valve, Gear operated

FIG. F1022-300

Specifications

- Meet or exceed the requirements of EN 593 and MSS SP-67 Standard.
- Vulcanized Disc Design for Bubble-Tight Shutoff.
- Outdoor and Indoor rated.
- Flag Type Position Indicator.
- Built-in Supervisory Switch.
- Grooved Ends Dimensions meet AWWA C606 Standard or other IPS Pipe.
- Face to Face Dimension complies with MSS SP-67.
- CNPP Certified.
- Rated Working Pressure 300 psi.

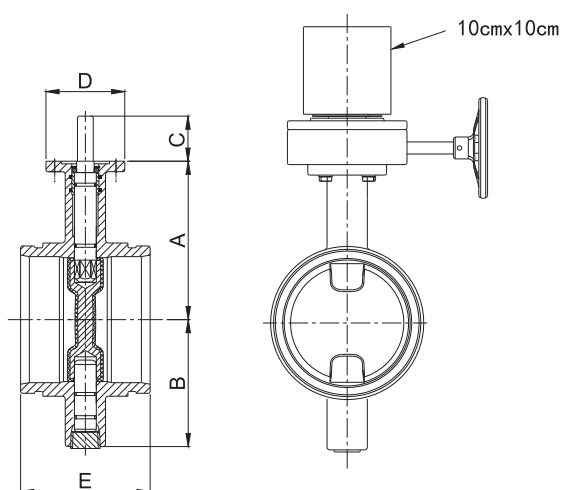
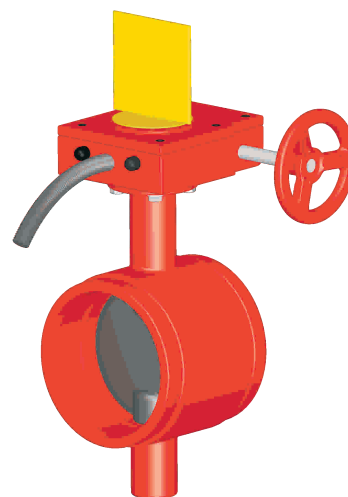
Corrosion Protection

- Fusion Bonded Epoxy Coated Interior and Exterior to AWWA C550 Standard.

Material Specifications

Part	Material	ASTM Specification
Body	Ductile Iron	EN1563 EN-GJS-450-10
Disc	EPDM fully Encapsulated Ductile Iron	
Shaft	Stainless Steel	EN10088 X17CrNi 16-2
Bushing	Brass	EN12168 CuZn39Pb3
Shaft Retainer Ring	Brass	EN12168 CuZn39Pb3
Housing	Gray Cast Iron	EN1561 EN-GJL-250
Fasteners	Carbon Steel	EN 24017

Schematic



Main Dimensions (mm/inch)

Size	A	B	C	D	E
2	100/3.94	75/2.95	52/2.05	90/3.54	84/3.30
2.5	110/4.33	85/3.35	52/2.05		97/3.81
3	115/4.53	90/3.55	52/2.05		97/3.81
4	145/5.71	110/4.30	52/2.05		116/4.56
5	145/5.71	120/4.75	52/2.05		148/5.81
6	185/7.28	145/5.70	52/2.05		148/5.81
8	200/7.87	180/7.00	72/2.83	126/4.96	133/5.25
10	250/9.84	230/9.00	75/2.95		159/6.25
12	275/10.83	260/10.25	73/2.87		165/6.50

Note

- Designs, materials and specifications shown are subject to change without notice due to the continuous development of our products.