

Double Interlocked Pre-Action Valve

FIG. 5311

General Description

- The Fig.5311 Pneumatically Actuated, Double Interlocked, Pre-Action Valve utilizes a Deluge Dry Pipe Valve and a pneumatic pilot system. The Fig.5311 is controlled by pressure maintained in the pneumatic release system and supervisory pressure maintained in the sprinkler piping system.
- The Model 5311 Double Interlocked Pre-Action Valve can also use for electrically and manual operation in case of emergency.
- Vertical or Horizontal Installation.
- The main valve is the same as Fig.9266.
- Flanged or Grooved connection.
- Rated Working Pressure 300 psi.
- The Maximum Air Supply Pressure: 30psi.
- UL listed in size 2", 2.5", 3", 4", 5", 6", 8", 10", 12".

Pressure Rating

- The Rated Pressure: 300 psi.
- The Maximum Air Supply Pressure: 30psi.

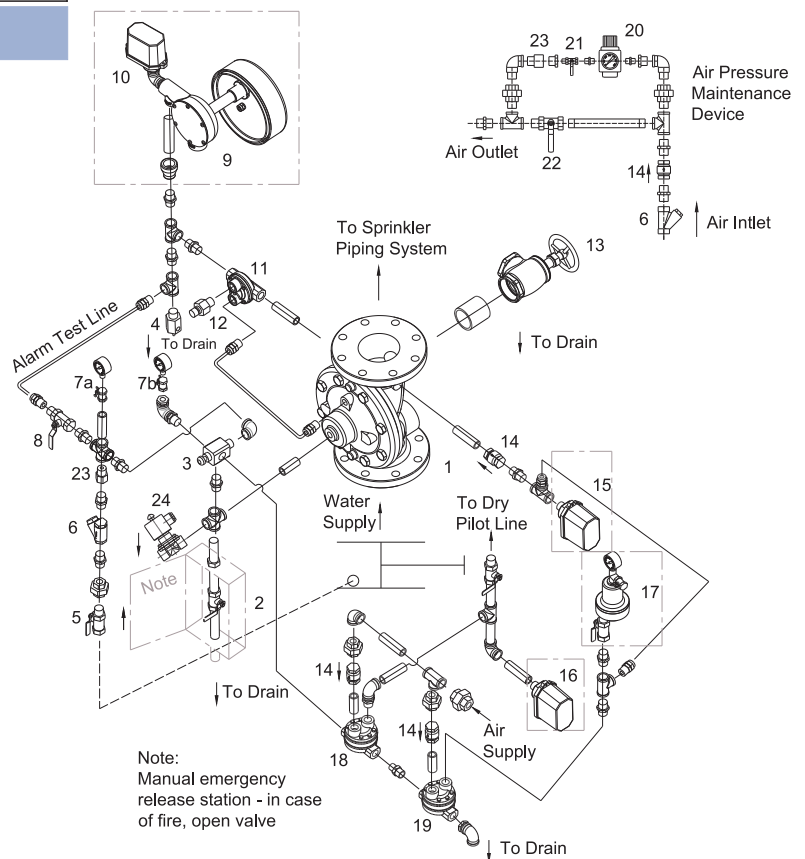
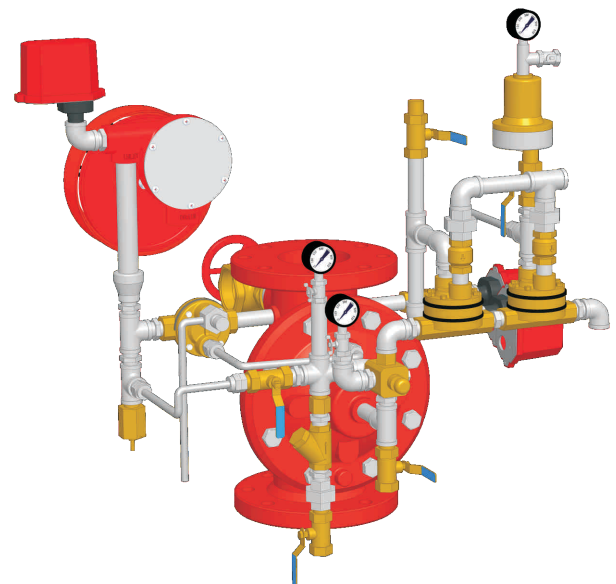
Starting Mode

Type	Description
1	Pneumatic-pneumatic actuation
2	Electric-pneumatic actuation
3	Electric-electric actuation

Trim Components

No.	Parts Name
1	Automatic Water Control Valve
2	Emergency Manual Release Station
3	Water Relay
4	Automatic Drain Valve
5	Trim Valve
6	Y-Strainer
7a	Supply Pressure Gauge (0~300 psi)
7b	System Pressure Gauge (0~300 psi)
8	Alarm Test Valve
9	Water Motor Alarm (Optional)
10	Pressure Supervisory Switch (Optional)
11	Hydraulic Actuator
12	Low-Pressure Drain Valve
13	Drain Valve
14	Check Valve
15	Sprinkler Piping Air Pressure Supervisory Switch (Optional)
16	Pilot Line Air Pressure Supervisory Switch (Optional)
17	Accelerator (Optional)
18	Dry Pilot Pneumatic Actuator
19	Sprinkler Piping Pneumatic Actuator
20	Air Regulator
21	Slow Fill Valve
22	Fast Fill Valve
23	Restrictor
24	Solenoid Valve (Optional)

Schematic



Pneumatic-pneumatic actuation

Notes

• Designs, materials and specifications shown are subject to change without notice due to the continuous development of our products.