

## Flap Valve

FIG. 5218

### Specifications

- WEFLO flap valve are made of ductile iron. A small differential pressure on the back of the gate causes it to open automatically to allow discharge through scours, sewer lines or drainage conduits. When water on the face side of the gate rises above water on the back side, the gate closes automatically to prevent backflow.

### Features

- Single link design for size DN80-DN150 double link design for size DN200-DN600.
- Suitable for wall or flange mounting.
- Maximum Pressure: 10 meters static on-seat head.

### Corrosion Protection

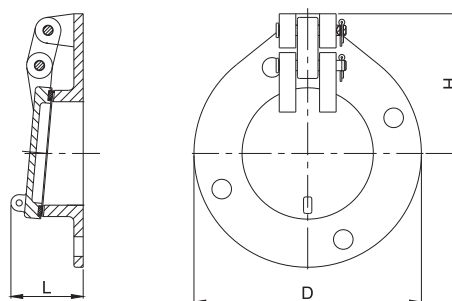
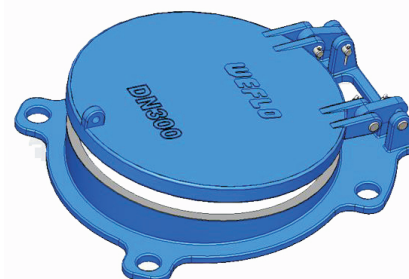
- Internally and Externally Liquid Painted.

### Material Specification

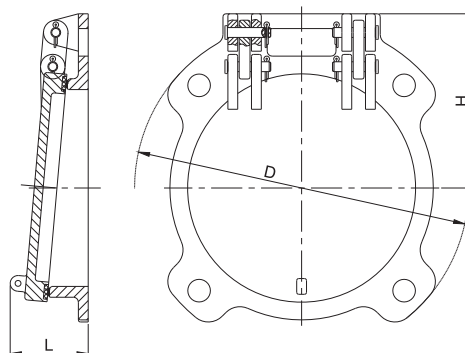
Part	Material	EN Specification	ASTM Specification
Body	Ductile Iron	EN 1563 EN-GJS-450-10	A536 Grade 65-45-12
Cover	Ductile Iron	EN 1563 EN-GJS-450-10	A536 Grade 65-45-12
Body Seat	Stainless Steel	EN 10088 X5CrNi18-10	A276 Type 304
Cover Seat	Rubber	EN 681 NBR	D2000 NBR
Link Stem	Ductile Iron	EN 1563 EN-GJS-450-10	A536 Grade 65-45-12
Pin	Stainless Steel	EN 10088 X5CrNiMo17-12-2	A276 Type 316

- SS316 or Bronze Body seat.
- Other material types are available upon request.

### Schematic



Size DN80-DN150



Size DN200-DN600

### Main Dimensions (mm)

Size	DN80	DN100	DN150	DN200	DN250	DN300	DN350	DN400	DN450	DN500	DN600
L	69	70	80	79	87	87	93	100	103	108	114
H	125	135	160	177	202	233	275	320	360	410	470
D	200	220	285	340	405	460	520	580	640	715	840

### Notes

- Designs, materials and specifications shown are subject to change without notice due to the continuous development of our products.