

Soft Sealing Ball Float Valve

FIG. 6105

Specifications

- The WEFLO Fig. 6105 offers a consistently reliable seal, with a soft sealing structure. An aluminum bronze body seat.
- Angle design type offers smooth operation with low resistance.
- Built-In Safety Features. The closing speed can be controlled, providing for smooth flow without pressure surges, water hammer, pipe vibration, or noise.
- Flanged to EN1092-2 PN10 / PN16.
Other Flange Types available.
- Working Pressure 0.5 bar to 16 bar.

Corrosion Protection

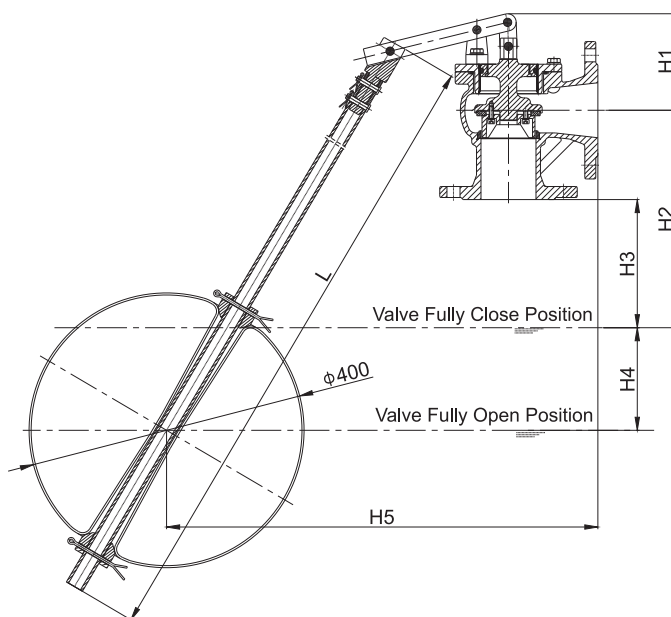
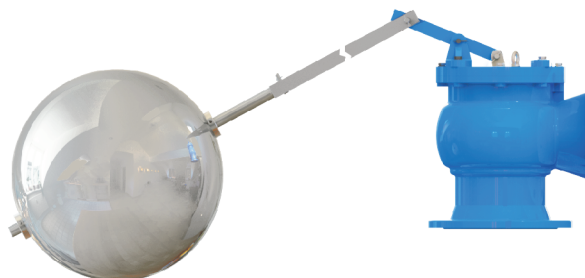
- Internally and Externally Liquid Epoxy Painted or Fusion Bonded Epoxy Powder Coated (FBE).

Material Specification

Part	Material	EN Specification
Body	Ductile Iron	EN 1563 EN-GJS-450-10
Body Seat	Bronze	EN 1982 CuAl10Fe2
Disc	Ductile Iron	EN 1563 EN-GJS-450-10
Seal Ring	Rubber	D2000 EPDM
Gasket	Rubber	D2000 NBR
Bonnet	Ductile Iron	EN1563 EN-GJS-450-10
Valve Guide	Stainless Steel	EN 10088 X5CrNi18-10
Link Lever	Carbon Steel	EN 1
SS Tube	Stainless Steel	EN 10088 X5CrNi18-10
Fulcrum Bracket	Ductile Iron	EN 1563 EN-GJS-450-10
Fastener	Stainless Steel	EN 10088 X5CrNi18-10
Floating Ball	Polypropylene	

- Other material types are available upon request.

Schematic



Main Dimensions (mm)

DN	50	65	80	100	150	200
L	960	1110	1260	1360	1500	1900
H1 (CLOSE)	138	164	169	188	238	286
H1 (OPEN)	115	140	140	160	215	255
H2	265	300	365	380	493	563
H3 (CLOSE)	155	170	235	240	313	343
H4 (OPEN)	250	365	395	460	440	657
H5 (CLOSE)	830	1023	1130	1250	1337	1795
H5 (OPEN)	630	655	800	850	878	1170

Notes

- Designs, materials and specifications shown are subject to change without notice due to the continuous development of our products.