

## Alarm and Test Valve

## FIG. F6011

### Specifications

- 1" or 1 1/4" full bore test valve.
- Easy access for servicing.
- Space saving design.
- Quick and easy installation.
- Less joints minimise risk of leaks.

### Installation Guide

- Carefully roll the vane opposite the direction of flow and screw the device into the manifold. Apply PTFE Teflon tape to the flow switch thread is recommended.
- Ensure the paddle does not interfere with the internal sides of the manifold. The stem should move freely when operated by hand.
- Care must be taken to properly orient the device for the direction of water flow.
- Tighten the device using a wrench on the flats of the device.

### Working Pressure and Temperature

- 300 psi @ 0°C - 68°C.

### Schematic

#### Threaded Ends



### Material Specifications

Part Name	Material
Ball Valve	Assembly
Body	Stainless Steel, A276
Waterflow Detector	F6001T
Pressure Gauge	P-1590 3-1/2"
Plug	Stainless Steel, A276

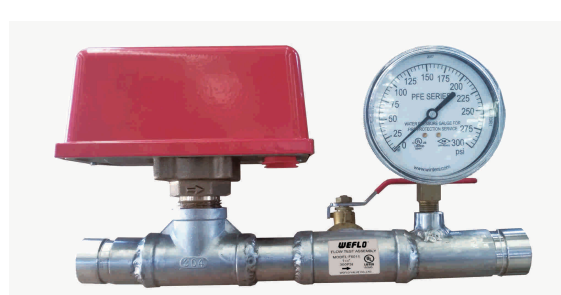
### Dimensions (mm / Inch)

Size	1	1 - 1/4
L	Threaded Ends 300 / 11.81	310 / 12.20
	Grooved Ends 320 / 12.60	320 / 12.60
C	150 / 5.91	155 / 6.10
D	1"	1-1/4"

### Corrosion Protection

- Fusion Bonded Epoxy Coated Interior and Exterior or Enamel Spray Paint, Interior and Exterior.

#### Grooved Ends



#### Note

- Designs, materials and specifications shown are subject to change without notice due to the continuous development of our products.