

## Single Door, Wafer Check Valve

FIG. F0412-300

### Specifications

- Meet or exceed the requirements of UL 312 and API 594 Standard.
- Spring Loaded for Fast Closure.
- Vertical or Horizontal Installation.
- Resilient-seated for perfect tightness even at low differential pressure.
- Excellent flow characteristics and low pressure losses at high flow rates.
- Connection Ends: Complied with ASME B16.1 Class 125 and ASME B16.5 Class 150 Flanges.
- Rated Working Pressure 300 psi.
- UL 312/ULC Listed and FM 1210 Approved.

### Corrosion Protection

- Fusion Bonded Epoxy Coated Interior and Exterior to AWWA C550 Standard.

### Options

- Spray Painted.

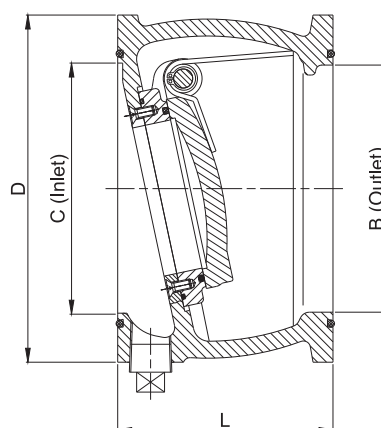
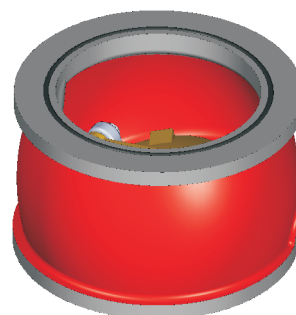
### Material Specifications

Part	Material	ASTM Specification
Body	Ductile Iron	A536 Grade 65-45-12
Body Seat Ring	Bronze	B148 C95200
Seat O-Ring	Rubber NBR	D2000
Disc	Bronze	B148 C95200
Spring	Stainless Steel	A276 Type 304
Seat Screw	Stainless Steel	F593 Grade 304
Hinge pin	Stainless Steel	A276 Type 304
Plug (only for 4in)	Malleable Iron	A47 Grade D2010

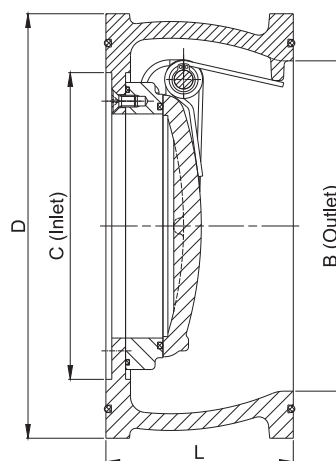
### Main Dimensions (mm/inch)

Size	4	6	8
L	108/4.25	95/3.75	95/3.75
D	174/6.75	216/8.50	280/11.00
B (Outlet)	124/4.88	168/6.60	220/8.60
C (Inlet)	126/4.96	156/6.14	195/7.70

### Schematic



Size 4", with draining plug



Size 6" & 8"

#### Notes

• Designs, materials and specifications shown are subject to change without notice due to the continuous development of our products.