

Vane-Type Waterflow Detector

FIG. F6001
FIG. F6001T

Specifications

- Equipped with tamper resistant screws to prevent unauthorized entry.
- Two synchronized switches are enclosed in a durable terminal block. Terminals are easy to read and wire.
- Built-In mechanical time delay feature; minimizing the risk of false alarms due to pressure surges or air trapped in the system.
- Offers excellent performance during riser vibrations caused by large in-rushes of water.
- Designed and built for accuracy and repeatability.
- Flow sensitivity range
UL/FM: 4-10 GPM (15-38 LPM)
CE/VdS/LPCB: 80L/min
- Contact rating
UL/FM: 8A at 125/250VAC, 3A at 24VDC
CE/VdS/LPCB: 4A at 125/250VAC; 1A at 24VDC

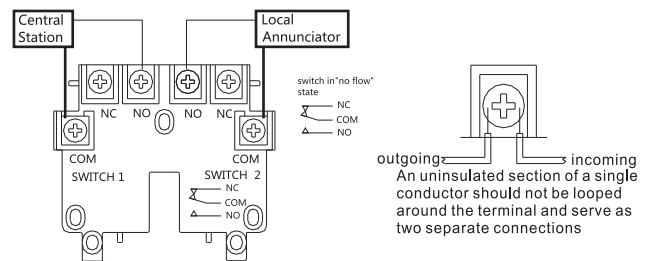
Working Pressure and Temperature

- UL/FM: 450 psi for 2" to 8", 300 psi for 10"
- CE/VdS/LPCB: 16 bar
- UL/FM Temperature: 0°C to 49°C
- CE/VdS/LPCB Temperature: 0°C to 68°C

Material Specifications

Fig.	Saddle	Cover
F6001	Aluminum B85 A04130	PC Aluminum B85 A04130
F6001T	Bronze, B148 C95200	PC Aluminum B85 A04130

Typical Connections



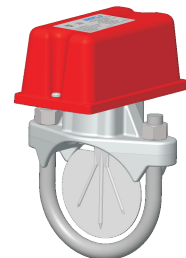
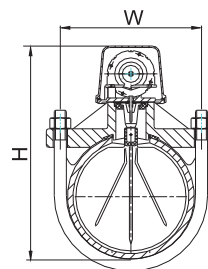
2" to 8" are UL/ULC Listed, FM Approved, EAC, CE, VdS, LPCB and 3C Certified, 10" is UL/ULC Listed

F6001

Main Dimensions (mm / Inch)

Size	2	2.5	3	4
W	84/3.31	92/3.62	104/4.09	133/5.24
H	190/7.48	200/7.87	220/8.66	245/9.65

Size	5	6	8	10
W	160/6.30	187/7.36	239/9.41	294/11.57
H	270/10.63	300/11.8	350/13.78	405/15.94



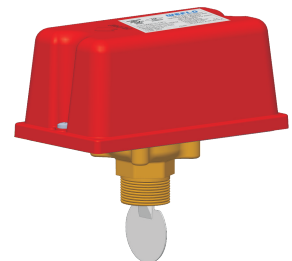
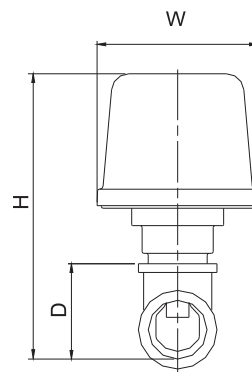
UL/ULC Listed, FM Approved, EAC and CE Certified

F6001T

Main Dimensions (mm / Inch)

Size	1	1-1/4
W	93 / 3.67	93 / 3.67
H	164 / 6.46	172.5 / 6.79
D (Depth)	54 / 2.12	62.5 / 2.46

Size	1-1/2	2
W	93 / 3.67	93 / 3.67
H	179 / 7.05	192 / 7.56
D (Depth)	69 / 2.71	82 / 3.22



Note

• Designs, materials and specifications shown are subject to change without notice due to the continuous development of our products.