

Water Motor and Gong

WMA-16

General

- The Water Motor Alarm is a hydromechanical automatic sound warning device actuated by water flow. It sounds a continuous alarm while a deluge or Water Control Valve operates.
- Should be used indoors.
- UL Listed, FM Approved, CE Certified.

Specifications

- End Connections
Inlet: 3/4" NPT
Outlet Drain: 1" NPT
- Gong Specifications
Outlet sound: 90 dB
- Working Pressure: 7 to 300 psi (0.5 to 20.7 bar).

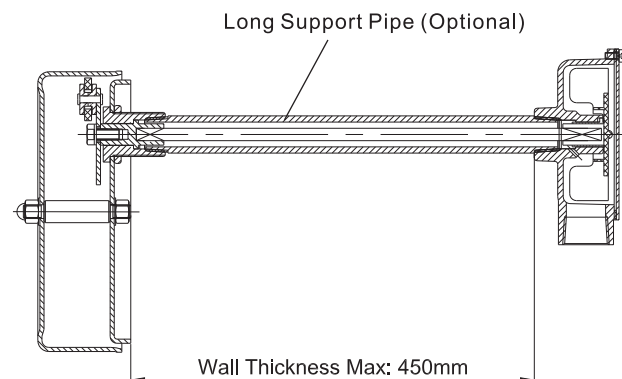
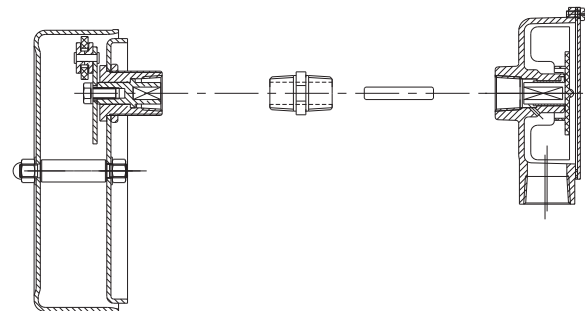
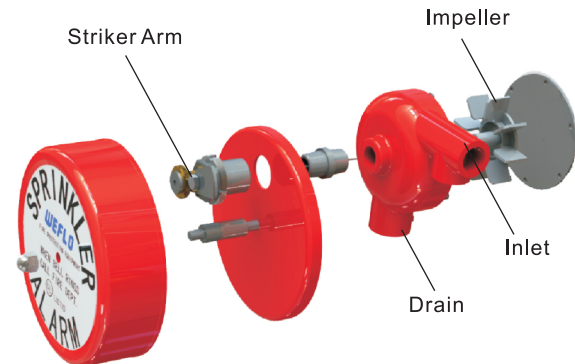
Material Specifications

- Gong: Aluminum
- Gong Mount: Aluminum
- Back Shaft: Aluminum
- Driver Shaft: SS304
- Water Motor: Cast Aluminum
- Impeller: Nylon
- Striker Ring: POM
- Striker Arm: SS304

Operation

- When a Deluge Valve is activated, water flows through the valve's trim, discharges to a strainer and into the water motor inlet. From the inlet, the water flows through a nozzle which directs the stream to the impeller. The stream turns the impeller and drive shaft, causing the striker arm to rotate, thus producing a continuous alarm. The water is discharged through a 1" (25mm) drain outlet at the bottom of the impeller housing.

Schematic



Notes

- Designs, materials and specifications shown are subject to change without notice due to the continuous development of our products.