

## C509 NRS Resilient Seated Gate Valve FL x PO Ends & PO x PO Ends

### Specifications

- Meet or exceed the requirements of AWWA C509 Standard.
- Full Waterway.
- 2" Square Operating Nut or Handwheel.
- Robust Design.
- Rubber Fully Encapsulated Ductile Iron Wedge.
- Triple O-Ring Stem Seal.
- Face to Face Dimension complies with ASME B16.10.
- Flange and Drilling comply with ASTM B16.1 Class 125.
- Push-on Joint Outlet complies with ANSI/AWWA C110/A21.10 Standard.
- UL/ULC 262 Listed, FM 1120/1130 Approved.
- Certificated to ANSI/NSF 61 & 372.
- Rated Working Pressure: 300 psi.

### Corrosion Protection

- Fusion Bonded Epoxy Coated Interior and Exterior to AWWA C550 Standard.

### Material Specification

Part	Material	ASTM Specification
Body	Ductile Iron	A536 Grade 65-45-12
Wedge	EPDM Fully Encapsulated Ductile Iron	
Wedge Nut	Bronze	B148 C95200
Bonnet	Ductile Iron	A536 Grade 65-45-12
Stem	Stainless Steel	A276 Type 304
Gland	Ductile Iron	A536 Grade 65-45-12
Operating Nut	Ductile Iron	A536 Grade 65-45-12
Post Flange	Ductile Iron	A536 Grade 65-45-12
Fasteners	Stainless Steel	F593 Grade 304
Body / Bonnet Gasket	EPDM	D2000

### Options

- 200 psi or 250 psi rated.
- ASTM B150 or other Standard Bronze Stem.
- ASTM A276 Type 316 Stem.
- With Post Flange.
- Other Flange Types available upon request.

### Main Dimensions (mm/inch)

Size	4	6	8	10	12
L- FL x PO	292/11.5	322/12.7	373/14.7	399/15.7	415/16.3
L- PO x PO	351/13.8	376/14.8	454/17.9	468/18.4	473/18.6
H	360/14.2	465/18.3	560/22.0	640/25.2	740/29.1
D	255/10.0	305/12.0	355/14.0	445/17.5	445/17.5

#### Notes

- 4" to 12" valves are UL listed.
- Designs, materials and specifications shown are subject to change without notice due to the continuous development of our products.

### Schematic

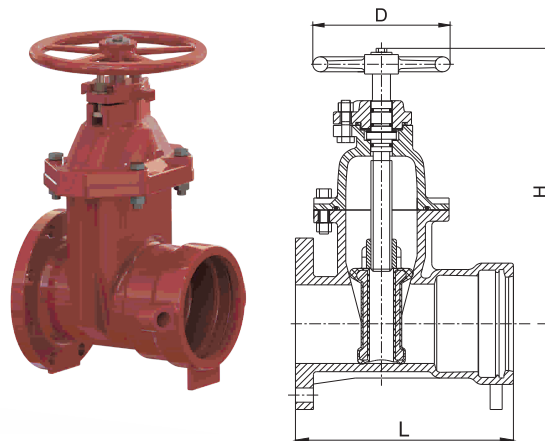


FIG.F1811-300-FP, FL x PO Ends

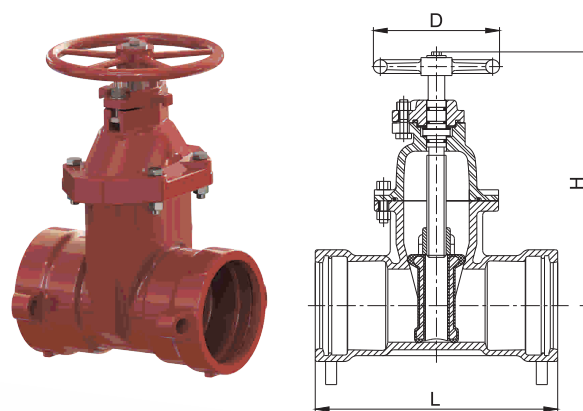


FIG.F1811-300-P, PO x PO Ends