

Dry Pipe Systems Valve

FIG. F2511 / F2512 / F2522

Specifications

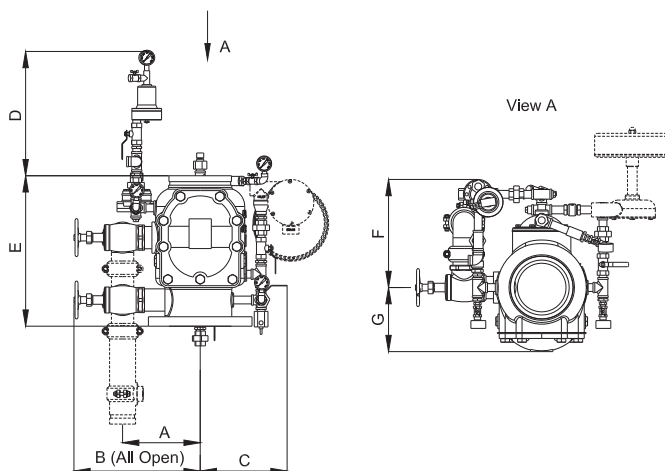
- Multiple End Types for Main Valve
F2511: Flange by Flange (FLxFL)
F2512: Flange by Groove (FLxGR)
F2522: Groove by Groove (GRxGR)
- Flanged connections are drilled per EN1092 -PN10/16 or ANSI B16.1 Class 125. (Other flange types available upon request)
- Grooved connections are cut in accordance with standard groove specifications for steel pipe.
- Peroxide cured EPDM with fabric diaphragm. The valves and trim as specified by the Standard for the installation of sprinkler systems, ANSI/NFPA 13.
- Latched-Clapper type.
- Dry pipe system valve should be installed vertically orientation.
- For use in dry pipe (automatic sprinkler) fire protection systems.
- Air supervisory Pressure Switches.
- Rated Working Pressure
UL/FM: 300 psi
CE: 16 bar.
- UL/ULC 260 Listed and FM 1020/1021 Approved.
CE Certified.
- Fusion Bonded Epoxy Coated Interior and Exterior to AWWA C550 Standard.
- Options: Dry Accelerator, Water Motor Alarm, Alarm Pressure Switch, Drain Connection Kit.

Material Specifications

Main Valve

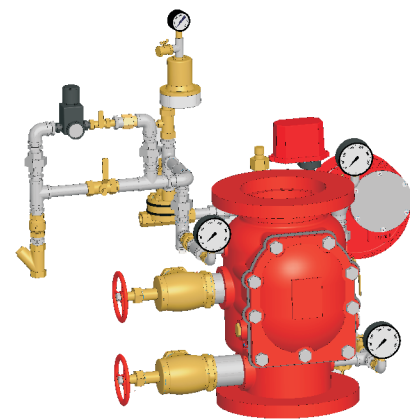
Part	Material	ASTM Specification
Body	Ductile Iron	A536 Grade 65-45-12
Hinge Pin	Stainless Steel	A276 Type 304
Clapper	Bronze	B148 C95500
Clapper Seal	Rubber	D2000 EPDM
Body Seat	Bronze	B62 C83600
Diaphragm	Rubber	Peroxide cured EPDM with fabric
Latch	Bronze	B148 C95500

Dimensions (mm/inch)



Accessories

Specification	Material
Screwed Pipe	Stainless Steel
Pipe Fittings	Stainless Steel
Ball Valve	Brass
Pressure Gauge	Assembly
½" Check Valve	Brass
2" Angle Valve	Brass
½" Y-Strainer	Brass
Restrictor	Brass
Water Motor	Assembly
Pressure Switch	Assembly
Drain Valve	Brass



Size	A	B	C	D	E			F	G
					FLxFL	FLxGR	GRxGR		
3"	150/5.90	300/11.81	210/8.27	375/14.76	325/12.80	310/12.20	310/12.20	265/10.43	120/4.72
4"	180/7.09	350/13.78	210/8.27	375/14.76	355/13.98	343/13.50	343/13.50	265/10.43	135/5.31
6"	210/8.27	375/14.76	250/9.84	345/13.58	431/16.97	405/15.94	405/15.94	290/11.42	175/6.89
8"	240/9.45	415/16.34	275/10.83	325/12.80	460/18.11	445/17.52	445/17.52	310/12.20	190/7.48

Notes

- Designs, materials and specifications shown are subject to change without notice due to the continuous development of our products.