

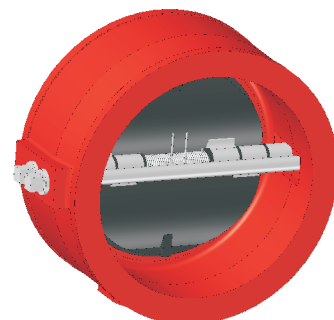
## Double Door Check Valve

FIG. F0411-175  
FIG. F0411

### Specifications

- Meet or exceed the requirements of UL312 Standard.
- Spring Loaded for Fast Closure.
- Vertical or Horizontal Installation.
- Resilient-seated for perfect tightness even at low differential pressure.
- Excellent flow characteristics and low pressure losses at high flow rates.
- Connection Ends comply with ASME B16.1 Class 125 and ASME B16.5 Class 150 Flanges.
- Rated Working Pressure  
F0411-175: 175 psi  
F0411: 300 psi
- UL 312 / ULC Listed.
- CNBOP Certified for FIG. F0411-175.

### Schematic

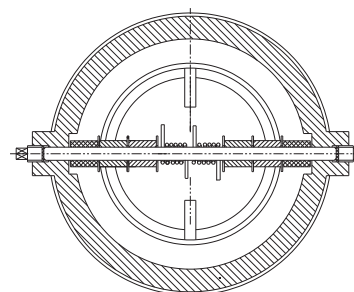
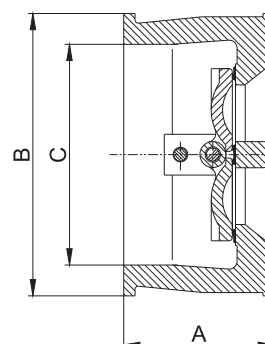


### Corrosion Protection

- Fusion Bonded Epoxy Coated Interior and Exterior to AWWA C550 Standard.

### Material Specifications

Part		Material	ASTM Specification
Body	F0411-175	Gray Cast Iron	A126 Class B
	F0411	Ductile Iron	A536 Grade 65-45-12
Body Seat Ring		Rubber	D2000 EPDM/NBR
Disc		Stainless Steel	A351 Grade CF8/CF8M
Hinge Pin		Stainless Steel	A276 Type 304
Spring		Stainless Steel	A276 Type 304
Stop Pin		Stainless Steel	A276 Type 304
Pin Retainer		Carbon Steel	A105



### Main Dimensions (mm/inch)

Size	4	6	8	10	12
A	93/3.66	105/4.13	121/4.75	154/6.00	187/7.36
B	172/6.75	220/8.66	280/11.00	340/13.40	410/16.14
C	136/5.35	178/7.00	230/9.00	285/11.25	338/13.31

#### Notes

- Designs, materials and specifications shown are subject to change without notice due to the continuous development of our products.