

## OS&Y Resilient Seated Gate Valve GR x GR Ends

FIG. F0122-300

### Specifications

- Meet or exceed the requirements of AS2638.2-2011.
- Full Waterway.
- Adjustable Packing.
- DI Body, DI Wedge encapsulated with portable water EPDM.
- Handwheel - open left or open right.
- Face to Face Dimension complies with ASME B16.10 and EN558 Series 3.
- Rated Working Pressure: 16bar.
- FM 1120/1130 Approved.

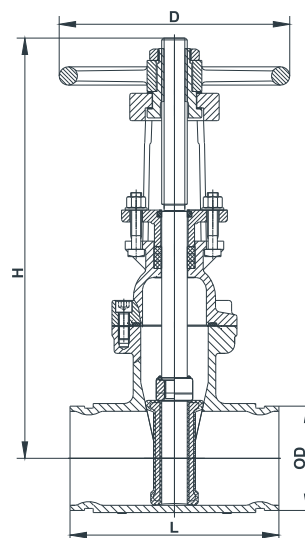
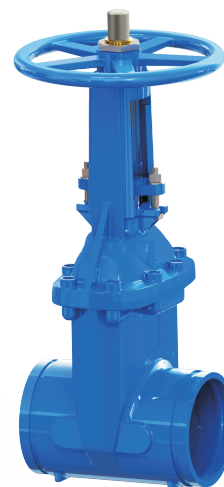
### Corrosion Protection

- Internally and Externally Fusion Bonded Epoxy Powder Coated.

### Material Specifications

Part	Material	ASTM Specification
Body	Ductile Iron	A536 Grade 65-45-12
Wedge	EPDM Fully Encapsulated Ductile Iron	
Bonnet	Ductile Iron	A536 Grade 65-45-12
Stem	Stainless Steel	A276 Type 431
Stem Nut	Bronze	B148 C95200
Packing	Graphite	Non-Asbestos
Gland	Ductile Iron	A536 Grade 65-45-12
Gland Stud	Stainless Steel	F593 Grade 316
Bonnet Fasteners	Carbon Steel	F593 Grade 316
Body / Bonnet Gasket	EPDM	D2000
Handwheel	Ductile Iron	A536 Grade 65-45-12

### Schematic



### Main Dimensions (mm/inch)

Size	DN80	DN100	DN150
OD	88.9	114.3	165.1
L	203	229	267
H(OPEN)	505	570	765
D	255	255	305

#### Notes

- Designs, materials and specifications shown are subject to change without notice due to the continuous development of our products.