

Pressure Relief Valve, Grooved Ends

FIG. 1319-G

Specifications

- Relief Valve: Limits inlet pressure by relieving excess pressure.
- Pressure Sustaining: Prevents inlet pressure from dropping below a predetermined minimum.
- Operates over a wide flow range.
- Inlet pressure is adjustable with single screw.
- Quick opening and adjustable closing speed.
- Grooved End complies with AWWA C606 Standard.
- 300 psi Maximum Working Pressure.
- Fusion Bonded Coating Interior and Exterior exceed all applicable of AWWA C550 Standard.

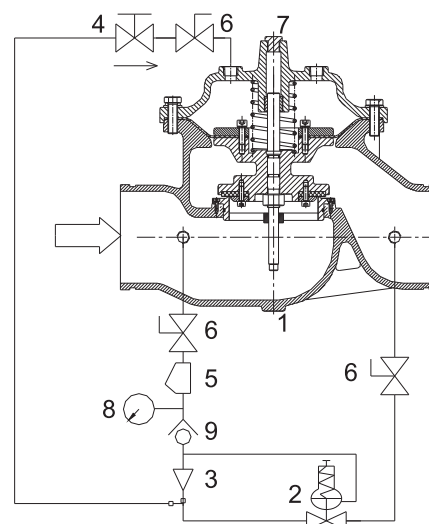
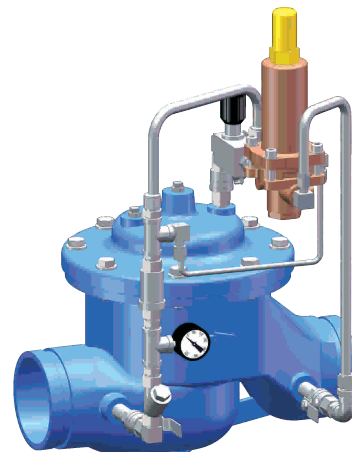
Material Specification

Main Valve

Part	Material	EN Specification	ASTM Specification
Body	Ductile Iron	EN 1563 EN-GJS-450-10	A536 Grade 65-45-12
Bonnet	Ductile Iron	EN 1563 EN-GJS-450-10	A536 Grade 65-45-12
Seat	Stainless Steel	EN 10213 GX5CrNi19-10	A351 Grade CF8
Stem	Stainless Steel	EN 10088 X5CrNi18-10	A276 Type 304
Diaphragm	Nylon Reinforced Natural Rubber/EPDM/NBR		
Seat Disc	Rubber	EN 681 EPDM/NBR	D2000 EPDM/NBR
Pressure Reducing Pilot	Bronze	EN 12420 CW306G	B148 C95200

Trim

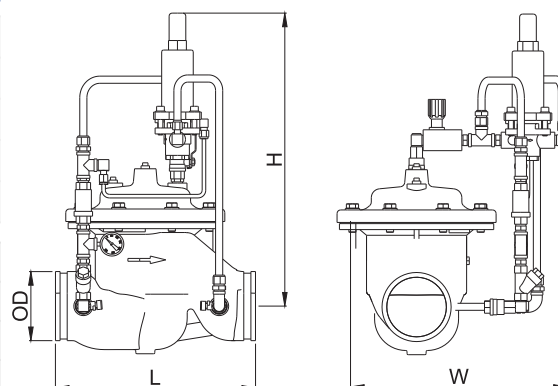
NO.	Components	NO.	Components
1	Basic Control Valve	6	Isolation Ball Valve
2	Pressure Relief	7	Plug or Visual Indicator
3	Ejector	8	Pressure Gauge
4	Flow Control Valve	9	Check Valve
5	Y-Strainer		



Main Dimensions(mm)

Size	DN40	DN50	DN65	DN80	DN100
L	220	241	290	325	381
H	180	200	215	265	290
W	260	270	290	305	320
OD	48.26	60.3	73	88.9	114.3

Size	DN125	DN150	DN200	DN250	DN300
L	419	508	645	762	900
H	340	390	470	570	690
W	340	370	420	470	520
OD	139.7/141.3	165.1/168.3	219.1	273	323.9



Notes

- Designs, materials and specifications shown are subject to change without notice due to the continuous development of our products.