

# KNIFE GATE VALVE

**WEFLO®**

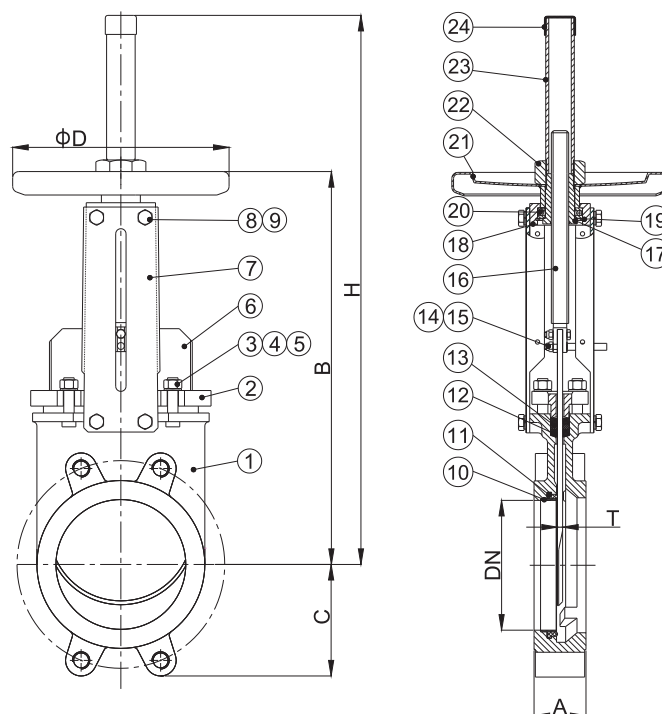
## WAFFER TYPE KNIFE GATE VALVE RISING STEM WITH HANDWHEEL

### FEATURES

- **Model 3318**
- Ductile Iron or Stainless Steel Body
- Uni-directional Wafer type
- Size Range: DN50 to DN450
- The cutting edge of the gate is inclined, which acts as a guide in the body and reduces the reaction force.
- NBR or EPDM Resilient Seat reduces the Operating Force necessary to close the valve.
- Full flow when fully opened, ensuring a high flow rate with low head loss.
- Connection Flanged Ends:  
EN1092-1/2, JIS B 2239/2220, AS 2129
- Maximum Working Temperature:  
NBR: 80°C; EPDM: 110°C
- Maximum Working Pressure:  
DN50-200: 10 bar  
DN250-300: 7 bar  
DN350-450: 4 bar

### MATERIAL

No.	Parts	Material
1	Body	EN-GJS-450-10/ Stainless Steel
2	Packing Gland	EN-GJS-450-10/ Stainless Steel
3	Nut	Carbon Steel / Type 304ss
4	Washer	Carbon Steel / Type 304ss
5	Stud	Carbon Steel / Type 304ss
6	Gate	Stainless Steel, Type 304/316
7	Support Plate	Steel
8	Bolt	Carbon Steel / Type 304ss
9	Spring Washer	Carbon Steel / Type 304ss
10	Retainer	Stainless Steel, Type 304/316
11	Seat	NBR / EPDM
12	Packing	PTFE
13	O-ring	NBR
14	Position Indicator	Stainless Steel, Type 304/316
15	Nut	Stainless Steel, Type 304/316
16	Stem	Stainless Steel, Type 410
17	Stem Nut	Bronze
18	Connect Seat	Steel
19	Closing Ring (DN125-450)	Spring Steel
20	Bearing (DN125-450)	Steel
21	Handwheel	Steel
22	Handwheel Nut	Steel
23	Hood	Steel
24	Hood Cover	Plastic



### DIMENSIONS (MM)

DN	A	B	C	D	H	T
50	40	289	60	200	360	5
65	40	313	65	200	400	5
80	50	335	95	200	420	5
100	50	380	103	200	488	5
125	50	415	114	250	564	6
150	60	470	129	250	635	6
200	60	580	157	300	809	8
250	70	670	197	300	946	8
300	80	768	217	300	1118	10
350	96	900	252	400	1282	10
400	100	997	286	400	1441	12
450	106	1100	310	400	1587	12

• DN300 Stainless Steel Body size A=70mm

*Designs, materials and specifications shown are subject to change without notice due to the continuous development of our products.*