



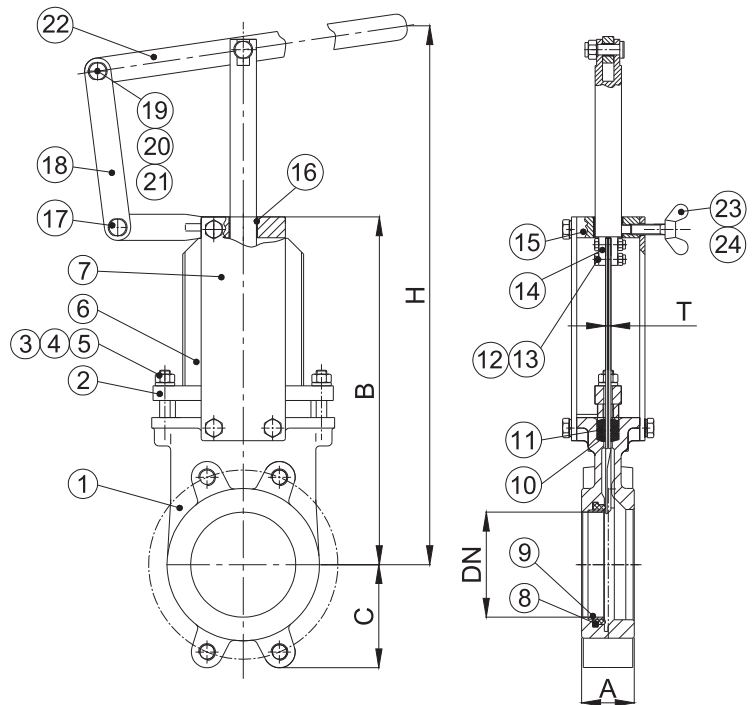
### WAFFER/LUG TYPE KNIFE GATE VALVE WITH LEVER

#### FEATURES

- **Model 3328**-Wafer type
- **Model 3528**-Lug type
- Ductile Iron or Stainless Steel Body
- Uni-directional Wafer / Lug type
- Size Range: DN80 to DN200
- The cutting edge of the gate is inclined, which acts as a guide in the body and reduces the reaction force.
- NBR or EPDM Resilient Seat reduces the Operating Force necessary to close the valve.
- Full flow when fully opened, ensuring a high flow rate with low head loss.
- Connection Flanged Ends:  
EN1092-1/2, JIS B 2239/2220, AS 2129
- Maximum Working Temperature:  
NBR: 80°C; EPDM: 110°C
- Maximum Working Pressure:  
DN50-200: 10 bar

#### MATERIAL

No.	Parts	Material
1	Body	EN-GJS-450-10/ Stainless Steel
2	Packing Gland	EN-GJS-450-10/ Stainless Steel
3	Nut	Carbon Steel / Type 304ss
4	Washer	Carbon Steel / Type 304ss
5	Stud	Carbon Steel / Type 304ss
6	Gate	Stainless Steel, Type 304/316
7	Support Plate	Steel
8	Seat	NBR/EPDM
9	Retainer	Stainless Steel, Type 304/316
10	Packing	PTFE
11	O-ring	NBR
12	Bolt	Stainless Steel, Type 304
13	Nut	Stainless Steel, Type 304
14	Stem	Stainless Steel, Type 304
15	Connect Seat	Carbon Steel
16	Oil Bearing	Composite Material
17	Hand Lever 1	Carbon Steel
18	Hand Lever 2	Carbon Steel
19	Hinge Pin	Stainless Steel, Type 304
20	Oil Bearing	Composite Material
21	Lock Nut	Stainless Steel, Type 304
22	Hand Lever 3	Carbon Steel
23	Fastening Bolt	Steel
24	Lock Pin	Brass / AL



#### DIMENSIONS (MM)

DN	A	B	C	H	T
80	50	284	95	513	5
100	50	331	103	672	5
125	50	361	114	760	6
150	60	413	129	828	6
200	60	520	157	1064	8