



KNIFE GATE VALVE

WEFLO®

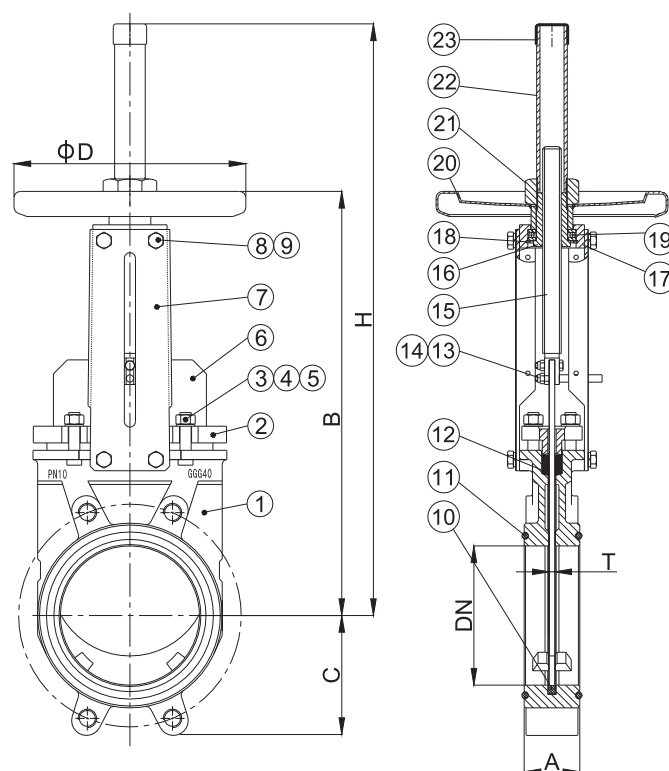
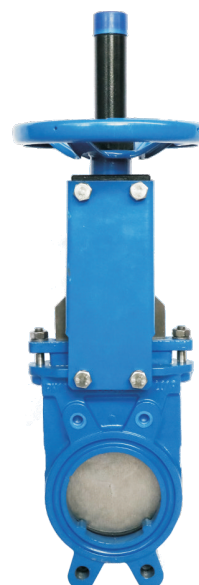
»»» WAFER/LUG TYPE KNIFE GATE VALVE RISING STEM, BI-DIRECTIONAL WITH HANDWHEEL

FEATURES

- **Model 3319**-Wafer Type
Model 3519-Lug Type
- Ductile Iron Body
- Bi-directional Wafer / Lug type
- Size Range: DN50 to DN300
- Full flow when fully opened, ensuring a high flow rate with low head loss.
- Connection Flanged Ends:
EN1092-2, JIS B 2239, AS 2129
- Maximum Working Temperature:
NBR: 80°C; EPDM: 110°C
- Maximum Working Pressure:
DN50-200: 10 bar
DN250-300: 7 bar

MATERIAL

No.	Parts	Material
1	Body	EN-GJS-450-10
2	Packing Gland	EN-GJS-450-10
3	Nut	Carbon Steel / Type 304ss
4	Washer	Carbon Steel / Type 304ss
5	Stud	Carbon Steel / Type 304ss
6	Gate	Stainless Steel, Type 304/316
7	Support Plate	Steel
8	Bolt	Carbon Steel / Type 304ss
9	Spring Washer	Carbon Steel / Type 304ss
10	Strip Seal	EPDM
11	O-ring	NBR/EPDM
12	Packing	PTFE
13	Position Indicator	Stainless Steel, Type 304/316
14	Nut	Stainless Steel, Type 304/316
15	Stem	Stainless Steel, Type 410
16	Stem Nut	Bronze
17	Connect Seat	Steel
18	Closing Ring(DN125-300)	Spring Steel
19	Bearing (DN125-300)	Steel
20	Handwheel	Steel
21	Handwheel Nut	Steel
22	Hood	Steel
23	Hood Cover	Plastic



DIMENSIONS (MM)

DN	A	B	C	D	H	T
50	40	297	60	200	362	5
65	40	324	65	200	395	5
80	50	342	95	200	425	5
100	50	387	105	200	505	5
125	50	418	118	250	565	6
150	60	470	132	250	638	6
200	60	580	158	300	809	8
250	70	675	196	300	952	8
300	80	770	220	300	1100	10

Designs, materials and specifications shown are subject to change without notice due to the continuous development of our products.