

## Lug Butterfly Valve

**FIG. 2502**

### Specification

- Meet or exceed the requirements of EN593, AS4795.1 and API STD 609.
- Replaceable liner.
- 2 shafts.
- Mounting Flange in accordance with ISO 5211.
- Face to face dimensions comply with EN558 Series 20, ASME B16.10.
- Suitable Connection Flange with EN1092 PN10/16, ASME B16.1 Class 125 and AS2129 Table D/E.
- Rated Working Pressure 16 bar/250 psi.
- WRAS Approved.

### Material Specification

Part	Material	EN Specification	ASTM Specification
Body	Ductile Iron	EN 1563 EN-GJS-450-10	A536 Grade 65-45-12
Shaft	Stainless Steel	EN 10088 X20Cr13	A276 Type 420
Disc	Stainless Steel	EN 10088 X5CrNi18-10	A351 Grade CF8
	Bronze	EN 1982 CuSn5Zn5Pb5	B62 C83600
	Ductile Iron	EN 1563 EN-GJS-450-10	A536 Grade 65-45-12
Liner	Rubber EPDM	EN 681	D2000
Bushing	PTFE	Commercial	Commercial
Seal Ring	Rubber NBR	EN 681 BUNA-N	D2000

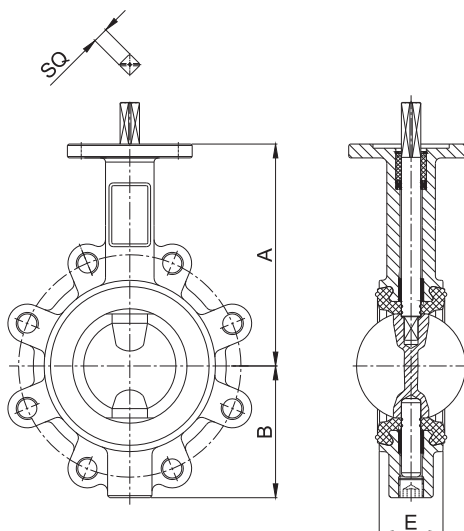
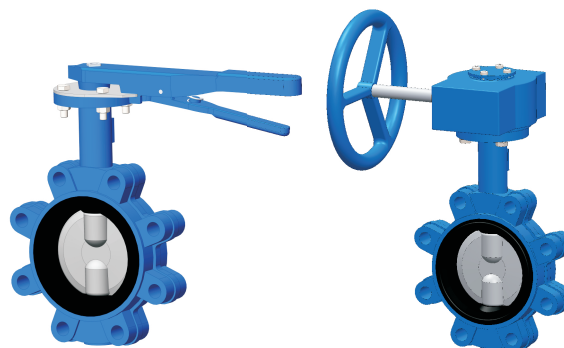
### Options

- Grey Cast Iron Body.
- Vulcanized liner available.
- 304/316 Stainless Steel Shaft.
- Gear Operator or Handle Operated.
- Built-in Temper Switch of Gear Operator.

### Corrosion Protection

- Fusion Bonded Coating or Liquid Painting Interior and Exterior.

### Schematic



### Main Dimensions (mm/inch)

Size	50/2	65/2.5	80/3	100/4	125/5	150/6	200/8	250/10	300/12
A	140/5.51	155/6.10	160/6.30	180/7.09	190/7.48	225/8.86	240/9.45	275/10.83	315/12.40
B	80/3.15	90/3.54	95/3.74	115/4.53	130/5.12	140/5.51	175/6.89	200/7.87	235/9.25
E	43/1.69	46/1.81	46/1.81	52/2.05	56/2.20	56/2.20	60/2.36	68/2.68	78/3.06
SQ	11x11 (0.43x0.43)			14x14 (0.55x0.55)		17x17 (0.67x0.67)		22x22 (0.87x0.87)	
Mounting Flange	F07						F10		

### Notes

- Designs, materials and specifications shown are subject to change without notice due to the continuous development of our products.

## Lug Butterfly Valve

FIG. 2502

### Specifications

- Meet or exceed the requirements of EN593, AS4795.1 and API STD 609.
- Vulcanized liner.
- One-piece shaft extending completely through the disc.
- Gear Operator for DN350 and larger sizes.
- Mounting Flange in accordance with ISO 5211.
- Face to face dimensions comply with EN558 Series 20, ASME B16.10.
- Suitable Connection Flange with EN1092 PN10/16, ASME B16.1 Class 125 and AS2129 Table D/E.
- Rated Working Pressure 16 bar/250 psi.

### Corrosion Protection

- Fusion Bonded Coating or Liquid Painting Interior and Exterior.

### Material Specification

Part	Material	EN Specification	ASTM Specification
Body	Ductile Iron	EN 1563 EN-GJS-450-10	A536 Grade 65-45-12
Liner	Rubber EPDM	EN 681	D2000
Disc	Stainless Steel	EN 10088 X5CrNi18-10	A351 Grade CF8
	Bronze	EN 1982 CuSn5Zn5Pb5	B62 C83600
	Ductile Iron	EN 1563 EN-GJS-450-10	A536 Grade 65-45-12
Shaft	Stainless Steel	EN 10088 X17CrNi 16-2	A276 Type 431
Shaft Bushing	Brass	EN 12165 CuZn39Pb1	B124 C37700
Seal Ring	Rubber NBR	EN 681 BUNA-N	D2000
Seal Bushing	PTFE	Commercial	Commercial

### Options

- 25 bar/300 psi available.
- Grey Cast Iron Body for sizes DN300 and smaller at 16 bar.
- Gear Operator or Handle Operated for sizes DN300 and smaller.

### Main Dimensions (mm)

DN	50	65	80	100	125	150	200	250	300	350	400	450	500	600
A	140	155	160	180	190	225	240	275	315	370	400	425	480	565
B	80	90	95	115	130	140	175	200	235	290	315	340	390	450
E	43	46	46	52	56	56	60	68	78	78	88	109	127	154
SQ	11x11			14x14		17x17		22x22			27X27		Dia.48	
Mounting Flange	F07						F10			F12	F14		F16	

#### Notes

- Designs, materials and specifications shown are subject to change without notice due to the continuous development of our products.

### Schematic

