



# KNIFE GATE VALVE



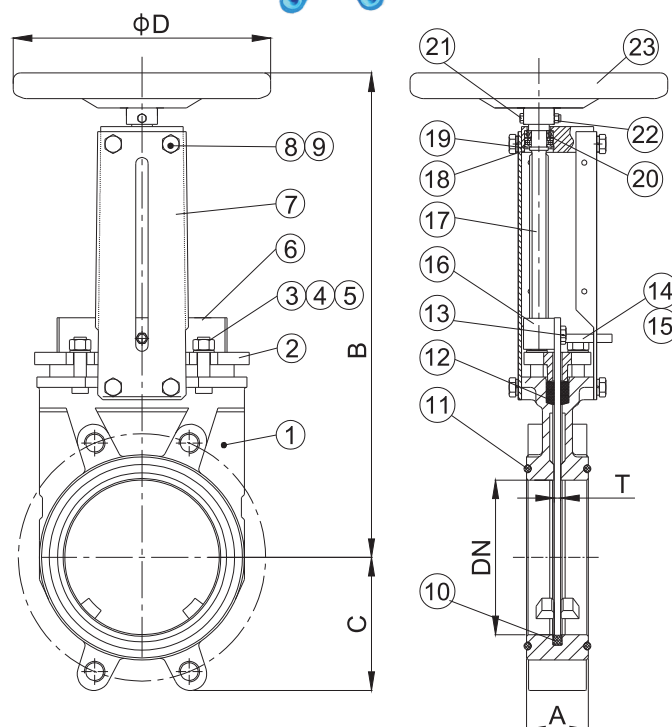
## »»» WAFER/LUG TYPE KNIFE GATE VALVE NON-RISING STEM, BI-DIRECTIONAL WITH HANDWHEEL

### FEATURES

- **Model 3329**-Wafer Type  
**Model 3529**-Lug Type
- Ductile Iron Body
- Bi-directional Wafer / Lug type
- Size Range: DN50 to DN300
- Full flow when fully opened, ensuring a high flow rate with low head loss.
- Connection Flanged Ends:  
EN1092-2, JIS B 2239, AS 2129
- Maximum Working Temperature:  
NBR: 80°C; EPDM: 110°C
- Maximum Working Pressure:  
DN50-200: 10 bar  
DN250-300: 7 bar

### MATERIAL

No.	Parts	Material
1	Body	EN-GJS-450-10
2	Packing Gland	EN-GJS-450-10
3	Nut	Carbon Steel / Type 304ss
4	Washer	Carbon Steel / Type 304ss
5	Stud	Carbon Steel / Type 304ss
6	Gate	Stainless Steel, Type 304/316
7	Support Plate	Steel
8	Bolt	Carbon Steel / Type 304ss
9	Spring Washer	Carbon Steel / Type 304ss
10	Strip Seal	EPDM
11	O-ring	NBR/EPDM
12	Packing	PTFE
13	Bolt	Carbon Steel / Type 304ss
14	Position Indicator	Stainless Steel, Type 304/316
15	Nut	Stainless Steel, Type 304/316
16	Stem Nut	Bronze
17	Stem	Stainless Steel, Type 410
18	Connect Seat	Steel
19	Closing Ring	Spring Steel
20	Bearing	Steel
21	Bolt	Carbon Steel / Type 304ss
22	Nut	Carbon Steel / Type 304ss
23	Handwheel	Steel



### DIMENSIONS (MM)

DN	A	B	C	D	T
50	40	291	60	200	5
65	40	315	65	200	5
80	50	337	95	200	5
100	50	380	105	200	5
125	50	418	118	250	6
150	60	473	132	250	6
200	60	580	158	300	8
250	70	675	196	300	8
300	80	770	220	300	10

Designs, materials and specifications shown are subject to change without notice due to the continuous development of our products.