

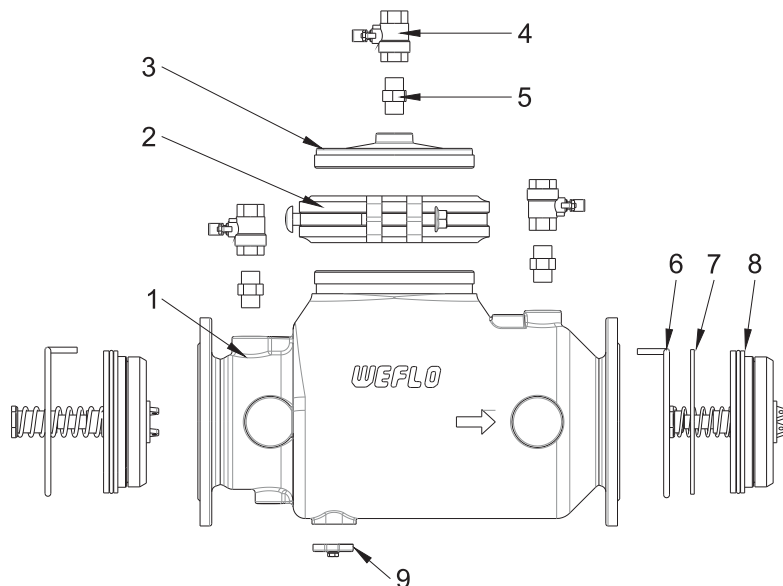
BACKFLOW PREVENTER - DOUBLE CHECK VALVE

FIG. F5410

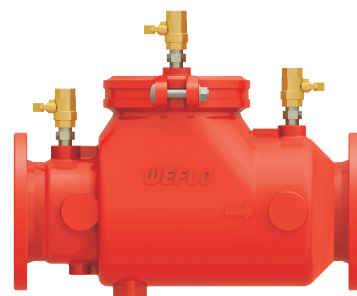
PRODUCT FEATURES

- A double check valve is a testable device designed for use in 'medium hazard' conditions to prevent backflow caused by back-siphonage or back-pressure. It is intended for use under continuous pressure conditions. The DCV have two check modules.
- Multiple Ends Types: Flange by Flange, Flange by Groove, Groove by Groove.
- Pressure Rating: 175psi / 12bar
- Working Temperature: Cold Water, not exceeding 60° C.
- Horizontal only.
- UL/ULC Listed in size 3",4",6",8".

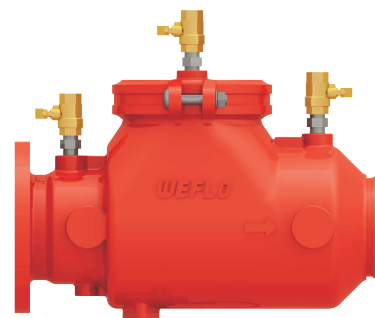
MATERIAL SPECIFICATIONS



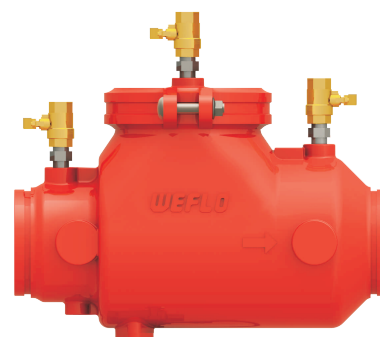
No.	Part	Material
1	Body	Ductile Iron
2	Grooved Coupling	Malleable Iron
3	Cover	Ductile Iron
4	Ball Valve	Brass
5	Nipple	Stainless Steel 316
6	Retaining Ring	Stainless Steel 304
7	Washer	Stainless Steel 304
8	DC Disc Assembly	Nylon+Stainless Steel
9	Plate	Ductile Iron



FLxFL Ends



FLxGR Ends



GRxGR Ends

Notes

- Designs, materials and specifications shown are subject to change without notice due to the continuous development of our products.